

# LS1 & Buildings 115, 507 and 601

# Building 601

- Building 601 (kitchen & entrance):
- Power has been cut and disconnected (Patrick Gallay EL)
- All items removed by the users
- All electrical cabinets and distribution have been removed (recuperated)
- Tourniquet has been removed and is stored for later use in 508 (Nino Rama)
- Preparation finishing for the desamiantage – treatment of the asbestos parts in roof and floor

# Desamiantage Bat 601 finished



# Building 115

- Power has been cut and disconnected (Patrick Gallay EL)
- All items (Solid State Lab) have been removed by the users – **checked by RP**
- Workshop machines have gone into storage
- All electrical cabinets and distribution have been removed (recuperated)
- Airco units have been recuperated (users)
- **Remaining the fiber optics connection: To be disconnected (after desamiantage)**
- De-classification (Class C) done by RP (Alexandre Dorsival, Christelle Saury, Matthieu Deschamps) – paperwork to be finished
- Gas bottles in the gas point to be removed

# Packing, thanks to the diligent in-house teams



# Empty building 115



# Packing workshop



# Desamiantage Bat 115 finished





# Building 507:

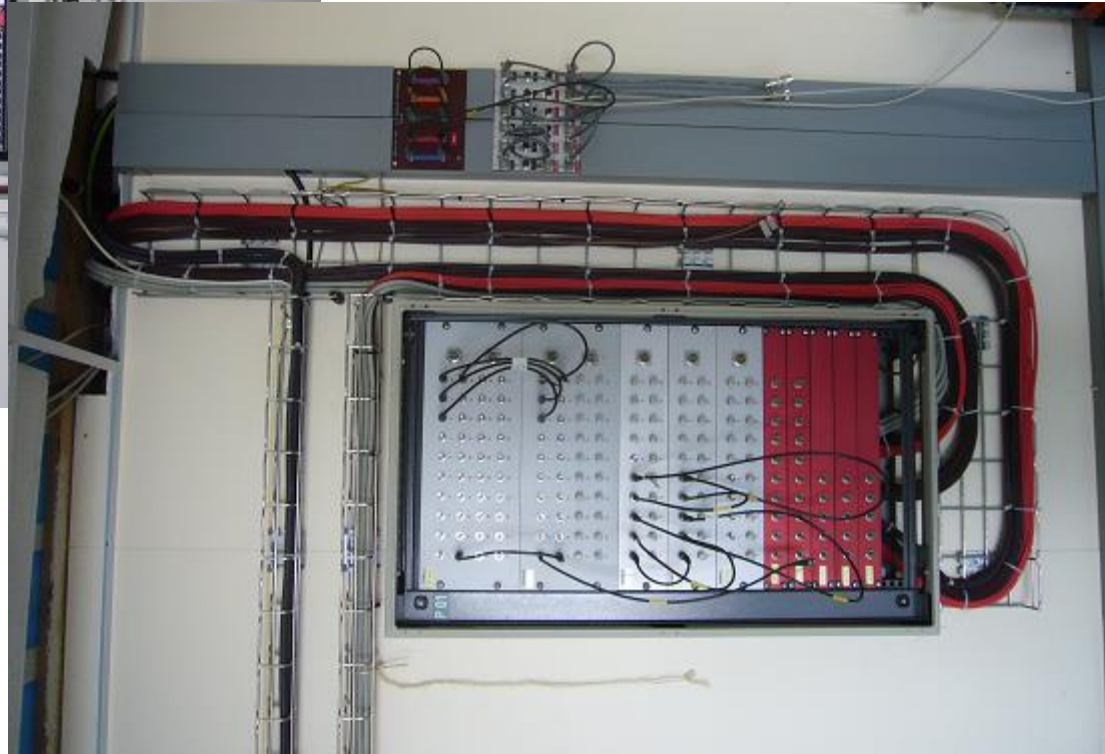
- Power has been cut and disconnected (Patrick Gallay EL)
- All items (Laser Labs) have been removed by the users – **checked by RP**
- All electrical cabinets and distribution have been removed (recuperated)
- Signal cabling to be pulled back into the hall for later use in the new 508 (Georgie Georgiev EL)
- **(unfortunately some signal cables got unforeseen cut from the Collaps Lab side)**
- Water has been cut upstream (Isolde water station) but there is a leak on the valve – to be changed before demolishing starts
- De-classification (Class C) will start

# Recuperation: electrical cabinets and power outlets



# Signal patch panels in 507 to be removed & recuperated.

- Cables will be pulled back into the hall to be reused in 508 (ongoing):



# New access stairs have been put in place to replace the ladder.

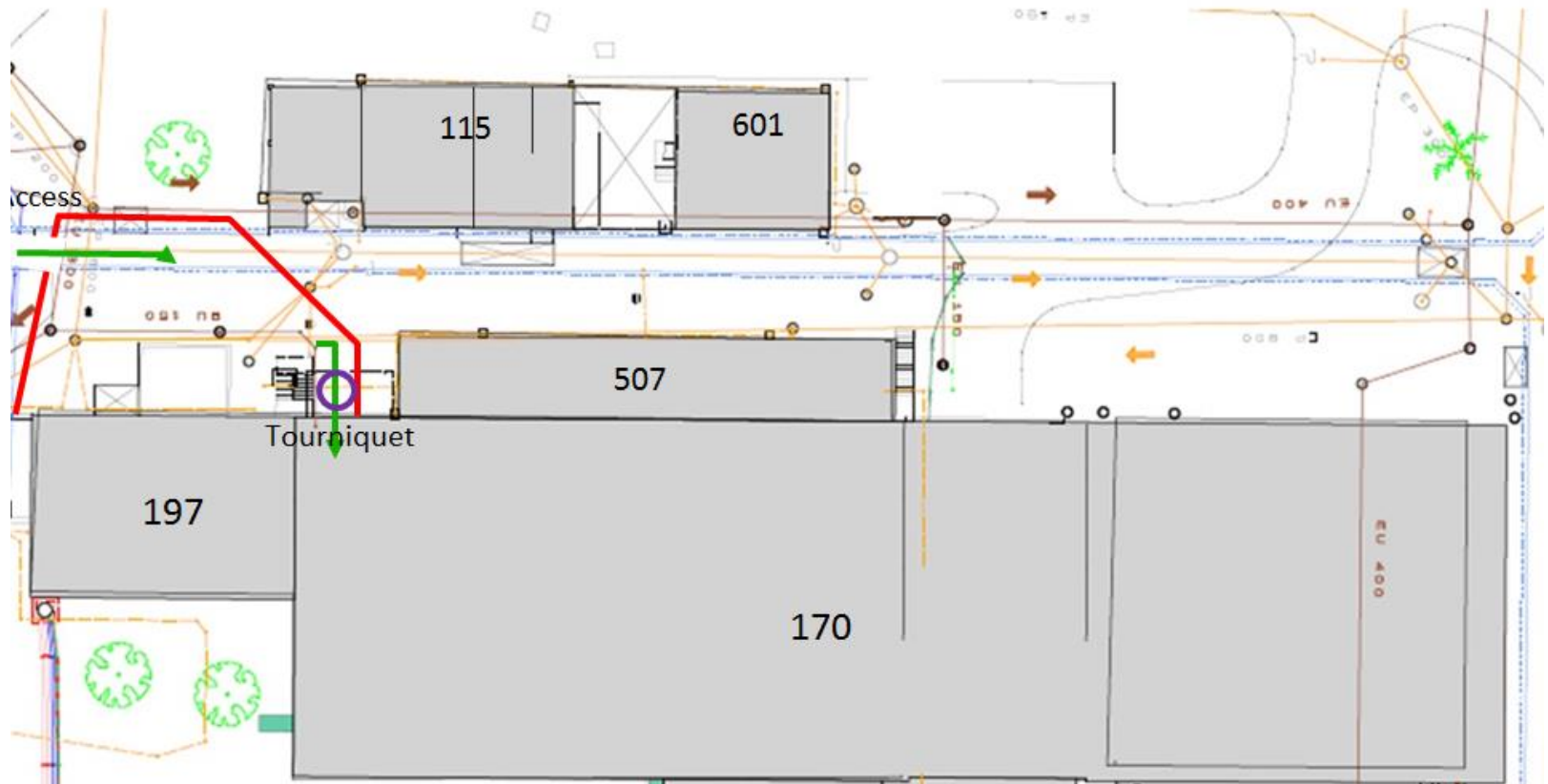


# Access:

- Temporary access by card reader on the hall 170 door has been put in place (with buzzer 10 min) (Nino Rama & team) – ok with RP
- Existing staircase from Rue Democrite will be re-used during work on the site.
- Fencing in place to separate access site from construction site
- Building 170:
  - New access stairs have been put in place to replace the ladder. They will give safe and easier access to the to be installed barrack on the 170 roof for released air measurements (Daniel Parchet)

# New Access during Building works

During 508 construction work:

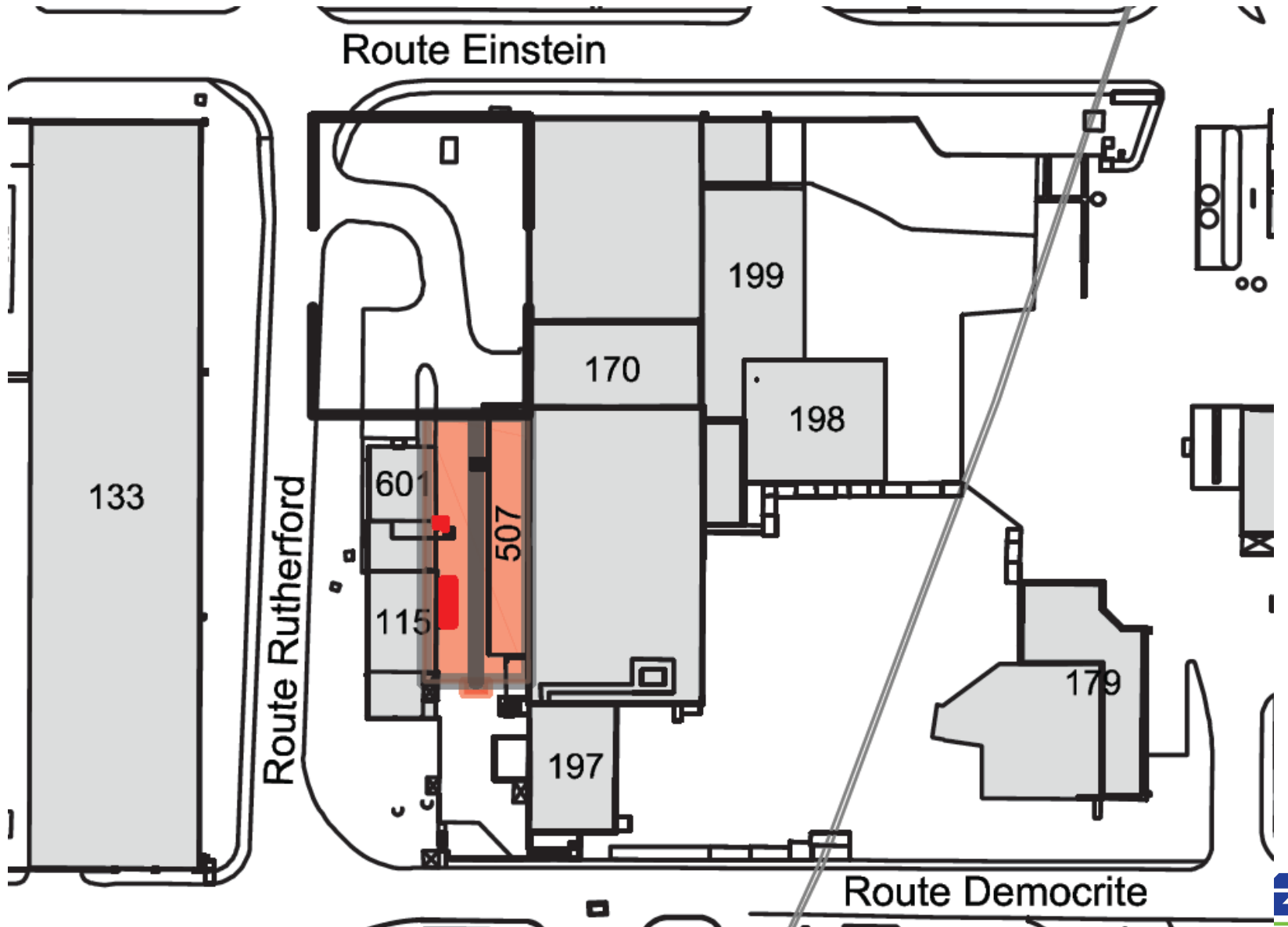


# New Access

- Access via old existing staircase (leaves and fence have been removed now). Access area blocked off from work site. Card reader on the Isolde hall door:

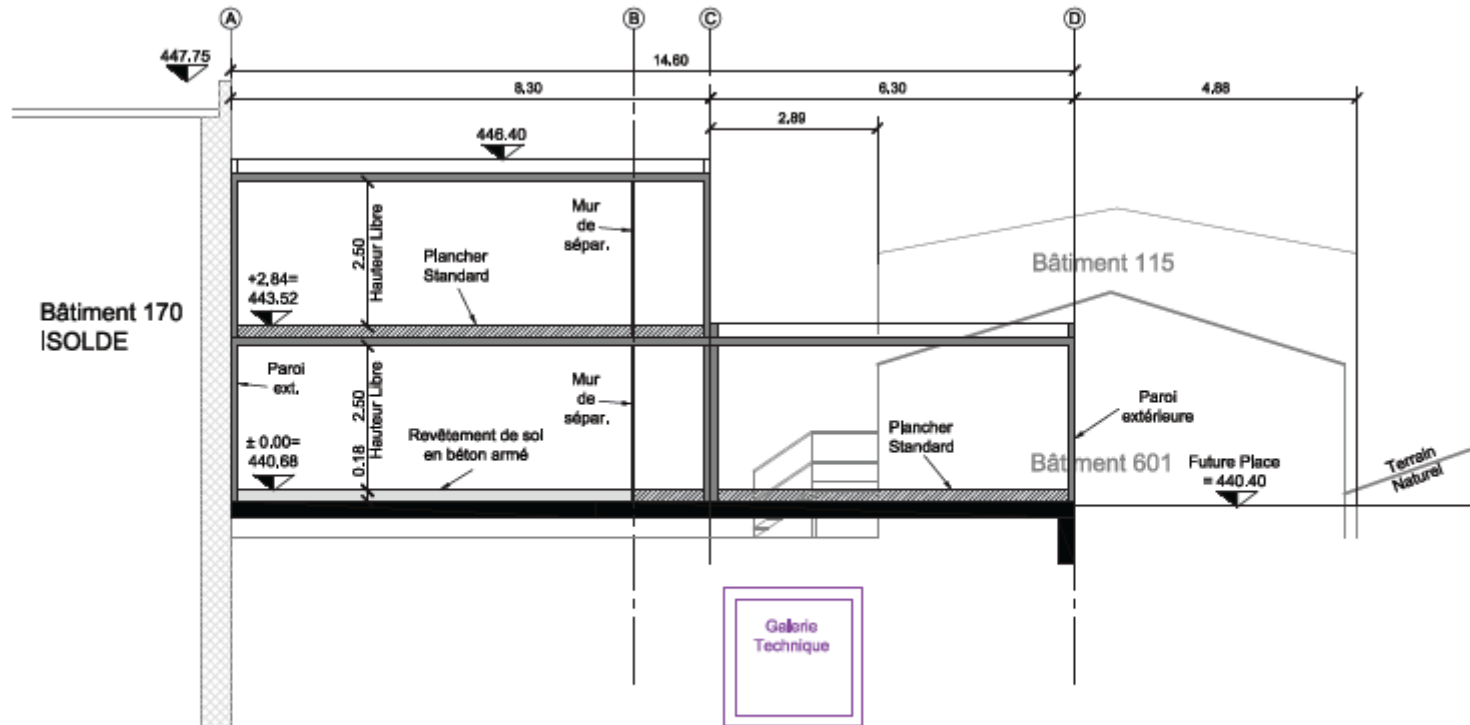


# Situation



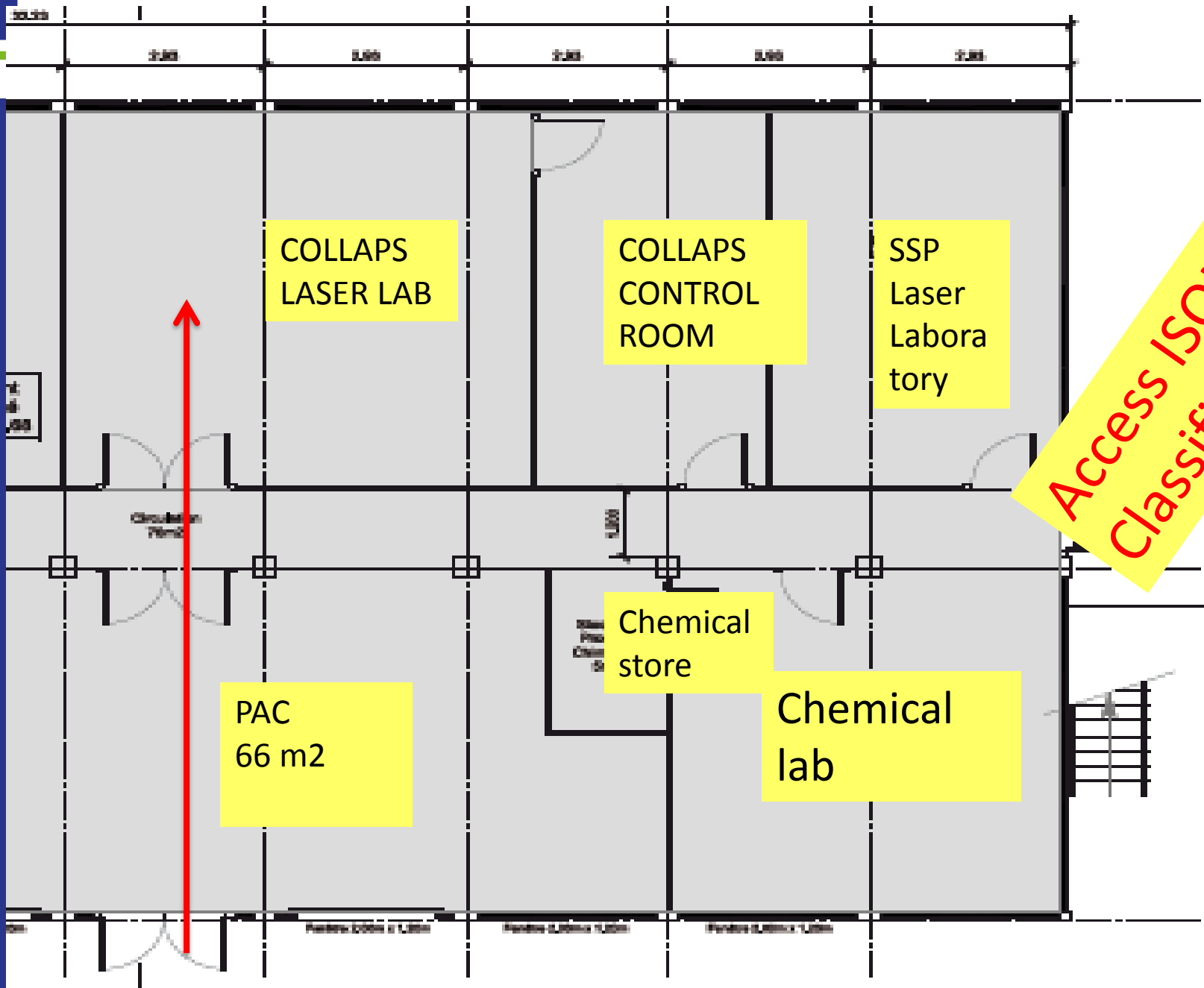


# Situation with respect old buildings



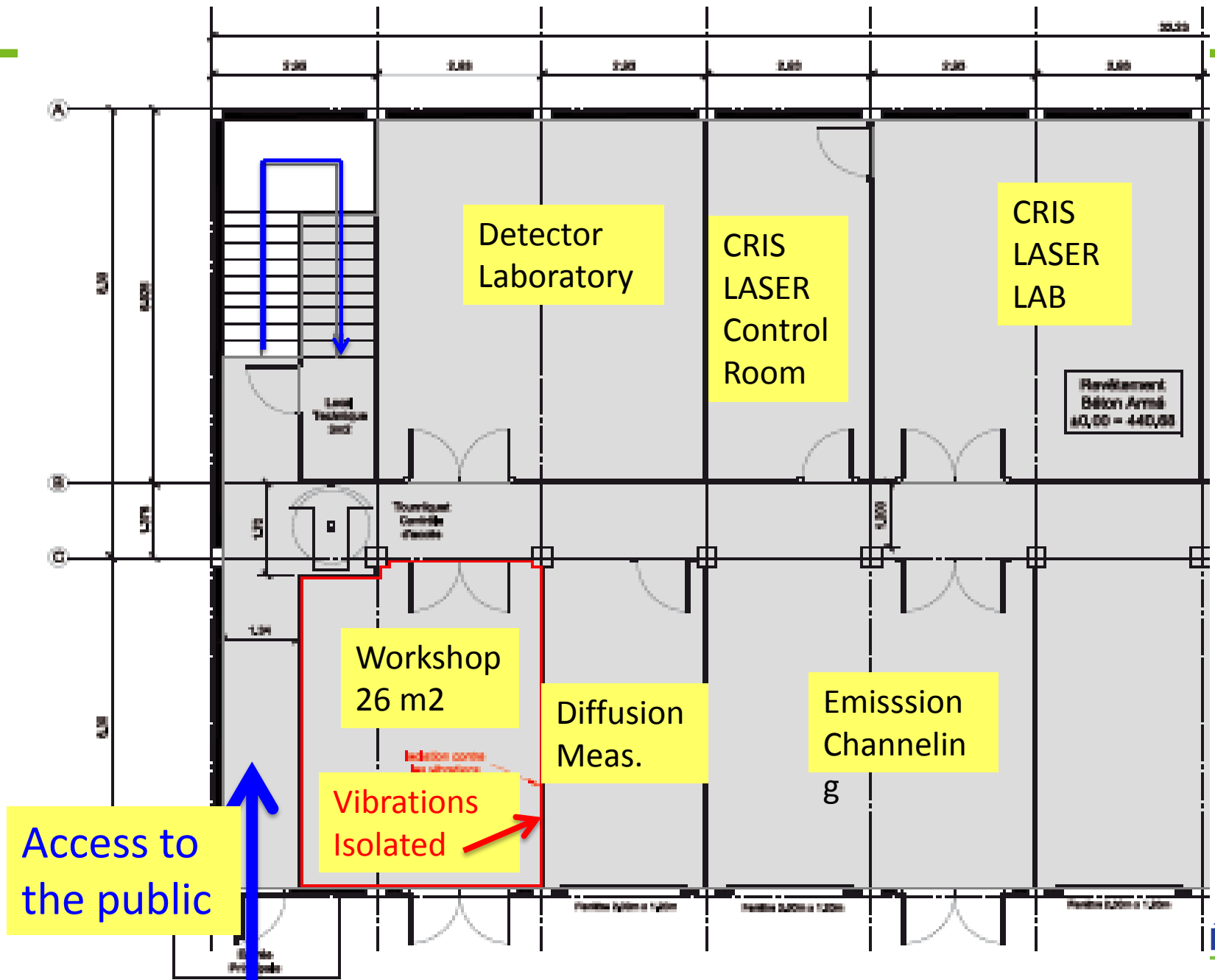
Bottom Floor: 450 m<sup>2</sup>  
Top Floor: 250 m<sup>2</sup>

# Building 508 / Bottom Floor I

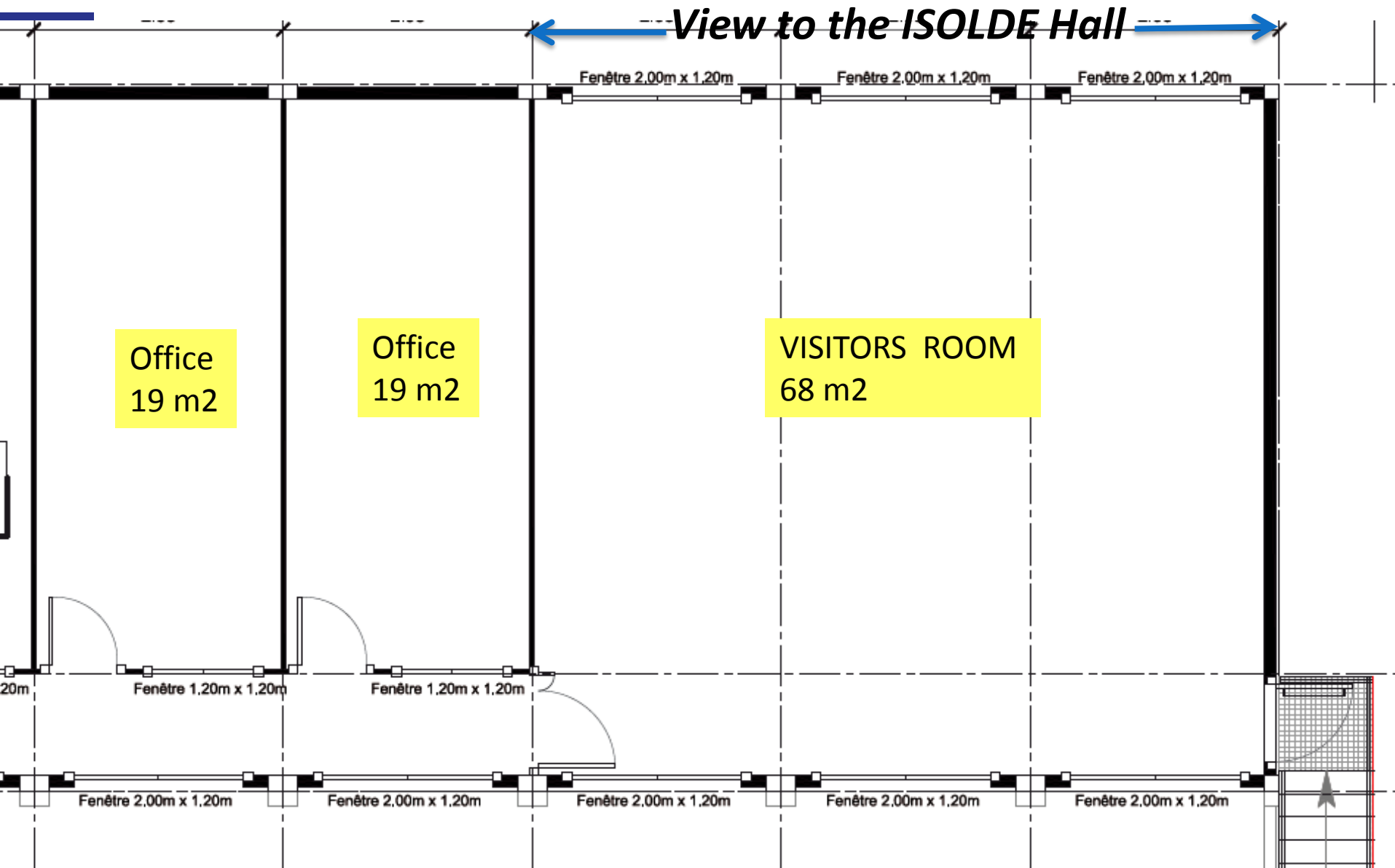


**Access ISOLDE Hall  
Classified C**

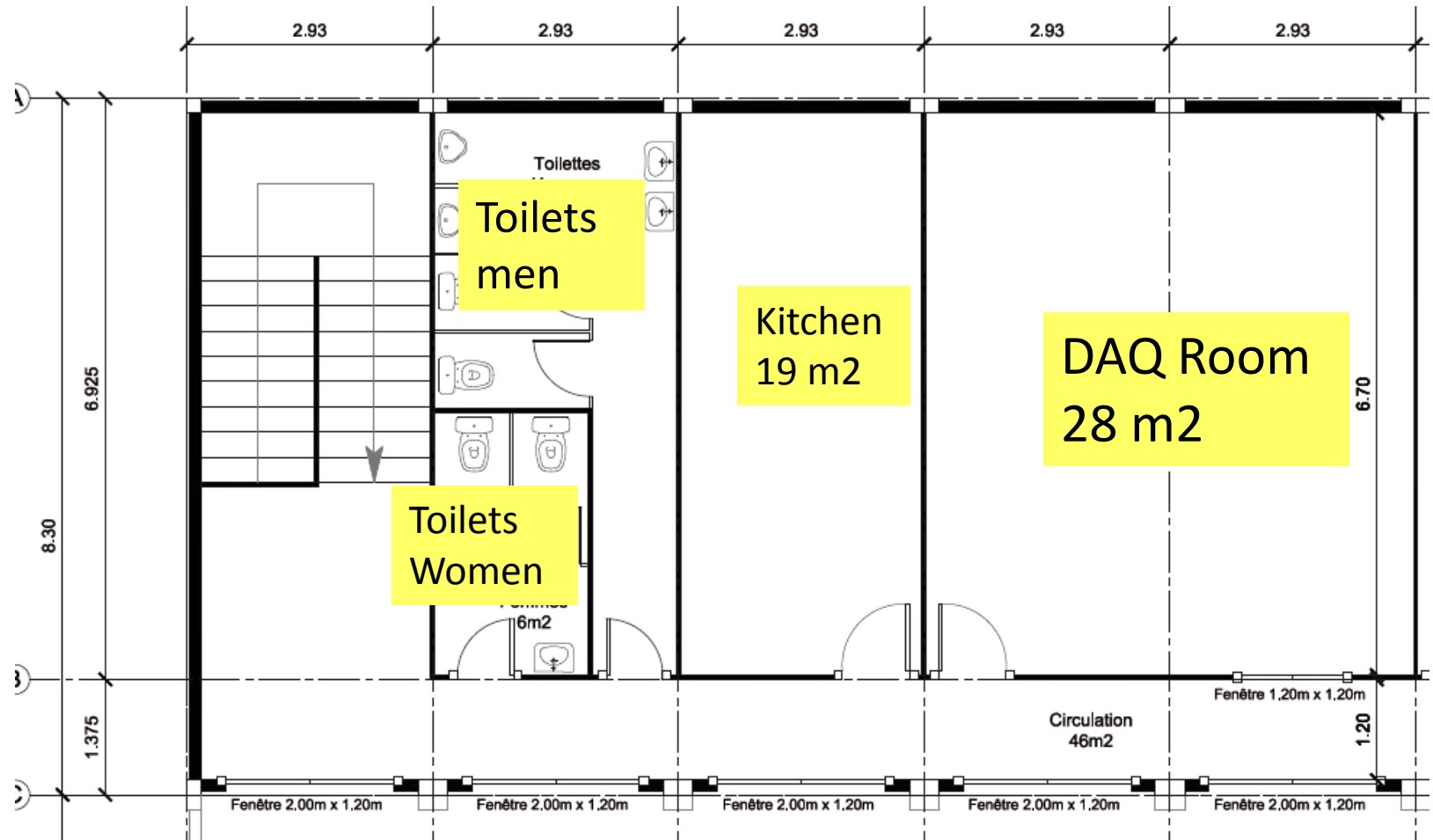
# Building 508 / Bottom Floor II



# Building 508 / part I



# Building 508 / part II



# Planning

- Asbestos: Desamiantage of bat 601 and 115 finished 5 July 2013
- Inspection of buildings: VIC next week
- Demolition: 14th July – 5th of August
- Drains and water networks: 5th August – 31st of August
- Concret Ground : September – Mid-October
- Mounting Modules : November
- MISSING for 2014:
  - Electricity
  - Water
  - Air conditioning
  - Optical fiber
  - Computer network

# Planning

